

Coaxial Frequency Mixer

Level 7 (LO Power +7 dBm) 300 to 4300 MHz

ZEM-4300+



CASE STYLE: V37

Connectors	Model	Price	Qty.
SMA	ZEM-4300+	\$79.95	(1-9)

+ RoHS compliant in accordance with EU Directive (2002/95/EC)

The +Suffix has been added in order to identify RoHS Compliance. See our web site for RoHS Compliance methodologies and qualifications.

Maximum Ratings

Operating Temperature	-55°C to 100°C
Storage Temperature	-55°C to 100°C
RF Power	50mW
IF Current	40mA

Coaxial Connections

LO	2
RF	1
IF	3

Features

- low conversion loss, 6.65 dB typ.
- broadband, 300 to 4300 MHz
- IF response to DC

Applications

- UHF/VHF
- MMDS
- ISM/GPS
- instrumentation

Electrical Specifications

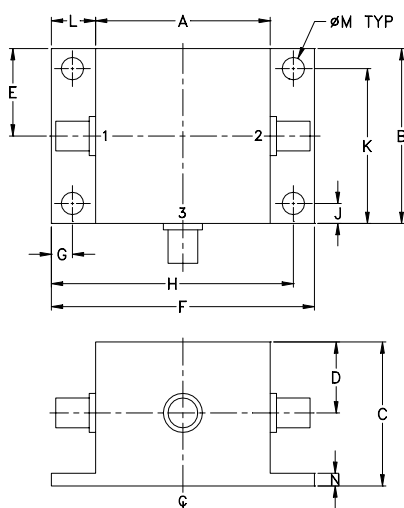
FREQUENCY (MHz)	CONVERSION LOSS (dB)	LO-RF ISOLATION (dB)				LO-IF ISOLATION (dB)						
		Mid-Band		Total Range Max.		L		U				
LO/RF f_L-f_U	IF \bar{X} σ	\bar{X}	σ	Max.	L Typ.	U Typ.	L Min.	U Min.				
300-4300	DC-1000	6.65	0.06	9.5	40	20	30	17	15	8	15	8

1 dB COMP.: +1 dBm typ.

L = low range [f_L to $10 f_L$]

U = upper range [$10 f_U$ to f_U]

Outline Drawing



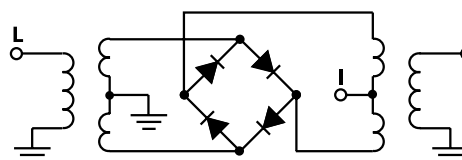
Outline Dimensions (inch/mm)

A	B	C	D	E	F	G
.83	.83	.75	.37	.42	1.25	.100
21.08	21.08	19.05	9.40	10.67	31.75	2.54
H	J	K	L	M	N	wt
1.150	.095	.735	.21	.106	.06	grams
29.21	2.41	18.67	5.33	2.69	1.52	22.0

Typical Performance Data

Frequency (MHz)	Conversion Loss (dB)	Isolation L-R (dB)	Isolation L-I (dB)	VSWR RF Port (:1)	VSWR LO Port (:1)	
						LO +7dBm
300.00	400.00	7.36	51.34	31.66	5.75	4.40
414.29	514.29	6.29	64.83	33.69	3.35	2.89
528.57	428.57	5.08	49.72	36.96	2.55	2.65
757.14	657.14	4.96	41.17	38.13	1.71	2.19
1000.00	900.00	5.45	37.81	30.37	2.55	2.08
1214.29	1114.29	6.11	36.73	26.04	3.13	1.99
1442.86	1342.86	6.61	35.66	22.90	3.50	1.85
1671.43	1571.43	6.86	34.88	19.27	4.13	1.68
1900.00	1800.00	7.03	33.74	17.66	4.48	1.61
2000.00	1900.00	7.13	33.54	17.52	5.06	1.57
2128.57	2028.67	7.43	33.70	17.76	5.38	1.47
2471.43	2371.43	8.04	33.24	18.85	5.56	1.41
2700.00	2000.00	8.34	33.45	19.52	5.51	1.37
2814.29	2714.29	8.52	34.07	19.86	5.27	1.36
3000.00	2900.00	8.85	33.99	19.95	5.77	1.58
3157.14	3057.14	9.03	33.55	19.48	6.97	1.60
3500.00	3400.00	9.22	32.04	18.72	8.72	2.03
3728.57	3628.57	9.04	30.42	18.47	8.23	2.39
4000.00	3900.00	8.91	29.46	20.82	7.47	2.43
4300.00	4200.00	8.41	33.24	24.62	6.26	2.13

Electrical Schematic



Mini-Circuits®
ISO 9001 ISO 14001 CERTIFIED

ALL NEW
minicircuits.com

P.O. Box 350166, Brooklyn, New York 11235-0003 (718) 934-4500 Fax (718) 332-4661 For detailed performance specs & shopping online see Mini-Circuits web site



The Design Engineers Search Engine Provides ACTUAL Data Instantly From MINI-CIRCUITS At: www.minicircuits.com

RF/IF MICROWAVE COMPONENTS

REV. B
M108294
ZEM-4300+
DJ/TD/CP/AM
070928
Page 1 of 2

